

# 7P Hex IP



Light Efficiency:

50 Lumen/Watt

Light Quality:

CRI: 72.5

Color Temperature:

6922 K

Output: 628 lm

Peak: 3377 cd

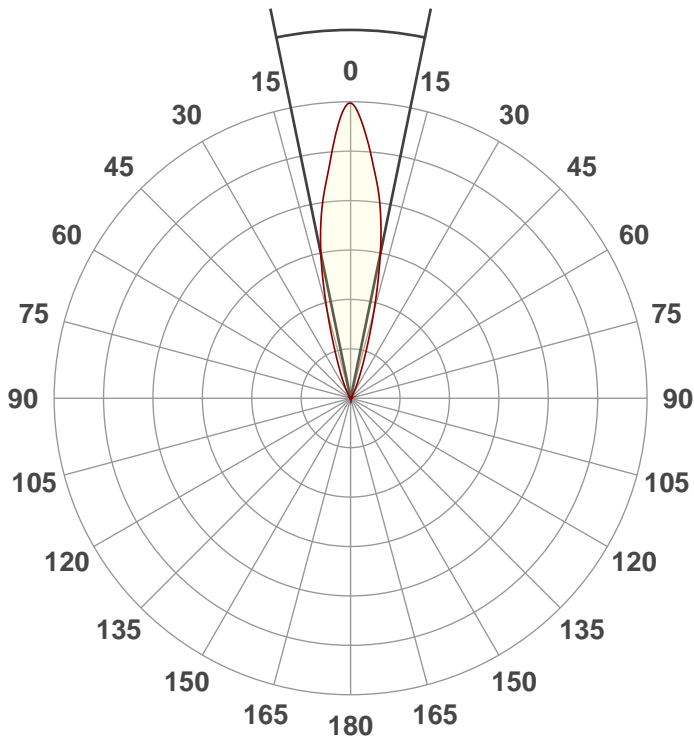
Power: 12.5 W

PF: 0.96



Beam Angle

23.3°



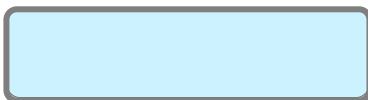
Test:

White

Date:

6/20/2018

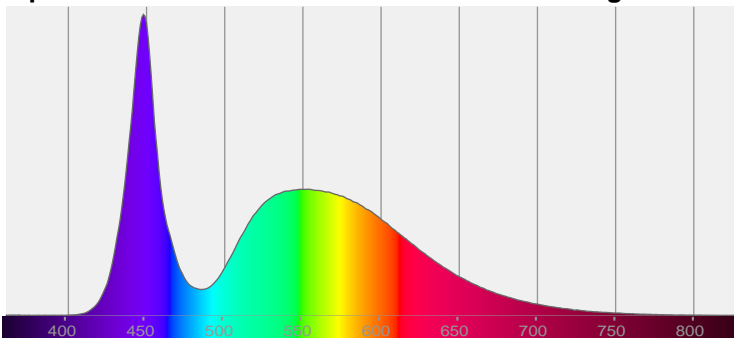
Note:



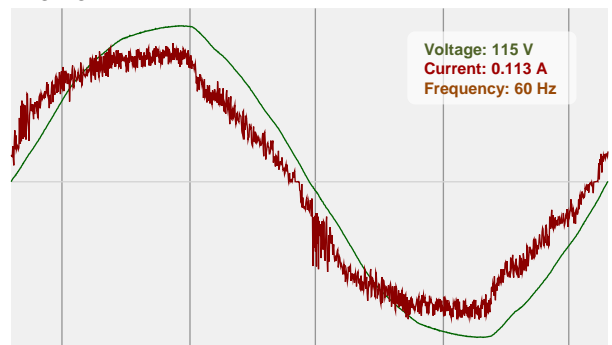
CIE 1931  
x: 0.308  
y: 0.317

Spectra

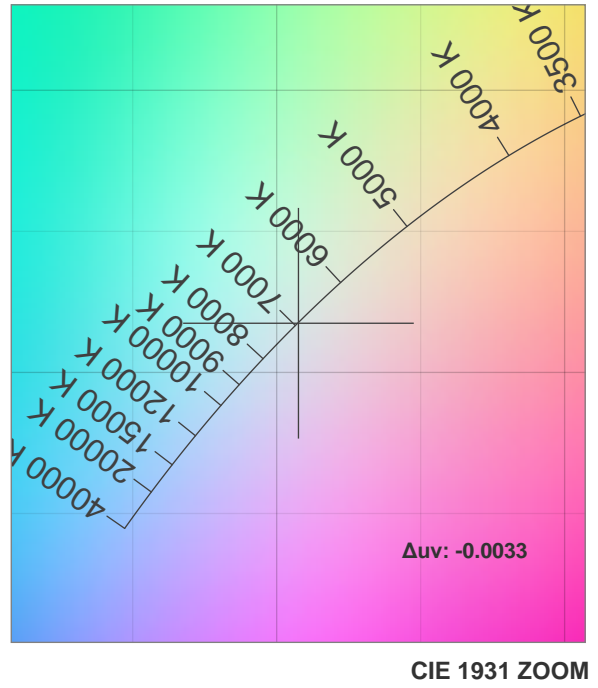
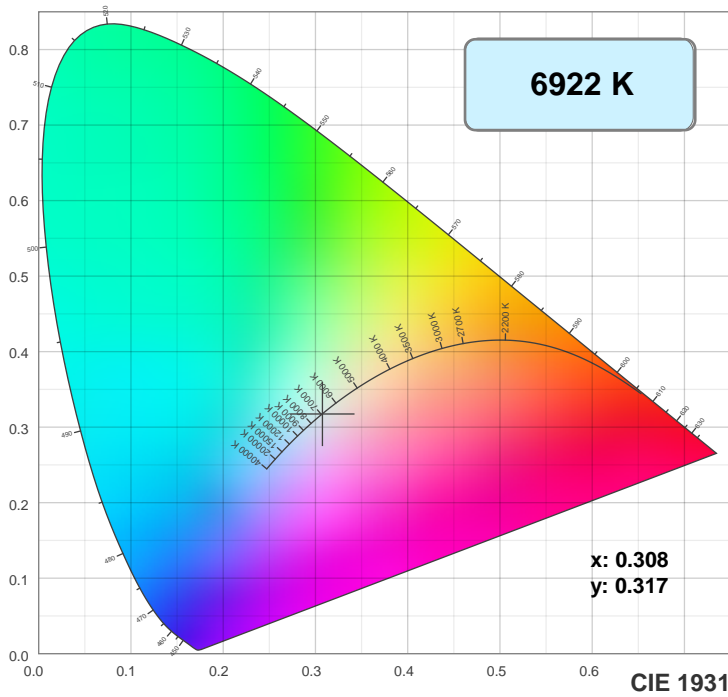
Dominant Wavelength: 428nm



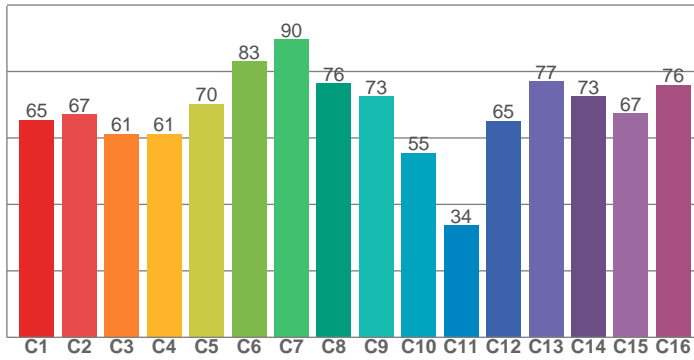
Power



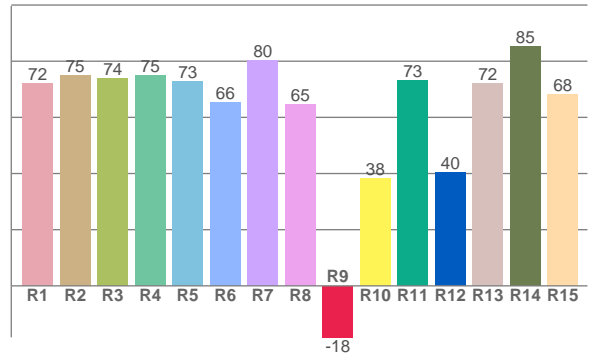
## Color Details



TM30: 68.2



CRI: 72.5 (R1-R8)



CRI R values, only R1-R8 are used to calculate final CRI value

R1	R2	R3	R4	R5	R6	R7	R8	R9	R10	R11	R12	R13	R14	R15
72.2	75.0	74.0	75.0	72.9	65.5	80.2	64.8	-18.3	38.1	73.2	40.5	72.0	85.3	68.1

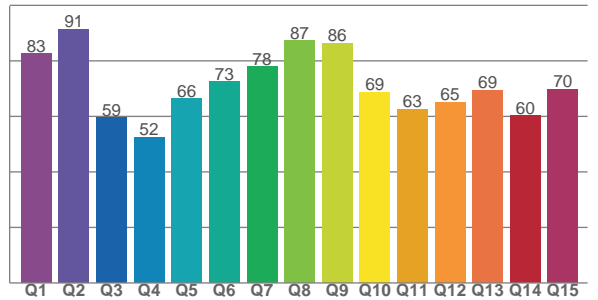
TM30 C values, 16 binned values out of total of 99 C values

C1	C2	C3	C4	C5	C6	C7	C8	C9	C10	C11	C12	C13	C14	C15	C16
65.4	67.1	61.2	61.3	70.3	83.1	89.7	76.4	72.5	55.5	33.7	65.2	76.9	72.6	67.3	75.9

CQS Q values

Q1	Q2	Q3	Q4	Q5	Q6	Q7	Q8	Q9	Q10	Q11	Q12	Q13	Q14	Q15
82.6	91.4	59.4	52.5	66.5	72.5	78.0	87.4	86.3	68.7	62.6	65.1	69.4	60.2	69.8

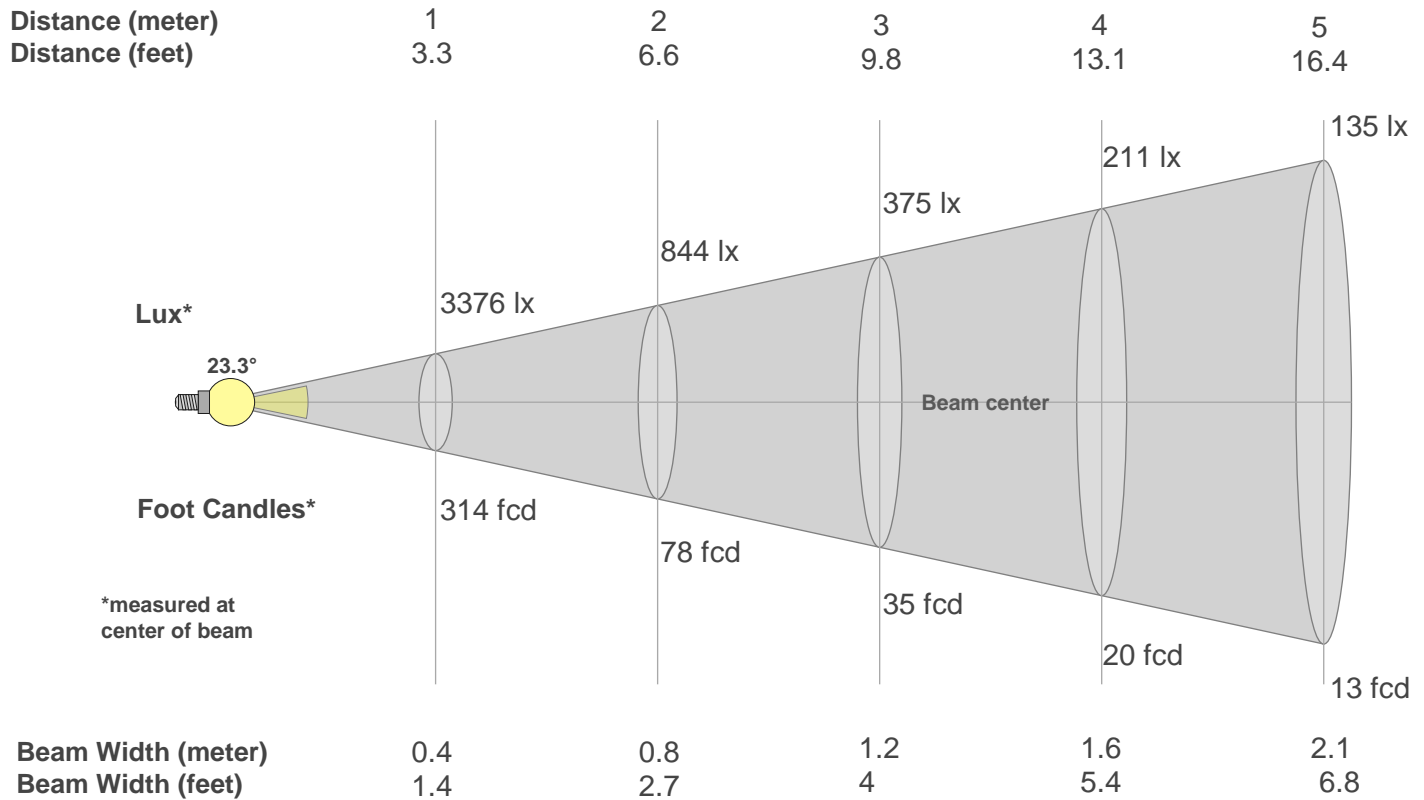
CQS: 69.4



## Color Parameters

Color Temperature	Color Rendering Index	Red Component	Color Fidelity	Color Gamut	Color Quality Scale	Color Coordinate CIE 1931	Color Coordinate CIE 1931	Color Coordinate	Color Coordinate	Color Deviation from Black Body
CCT	CRI	CRI R9	TM30 Rf	TM30 Rg	CQS	x	y	u	v	$\Delta uv$
6922 K	72.5	-18.3	68.2	94.9	69.4	0.308	0.317	0.199	0.307	-0.0033

## Beam Details



Beam Intensities from 1-20m

m	1	2	3	4	5	6	7	8	9	10	11	12	13	14	15	16	17	18	19	20
ft	3.3	6.6	9.8	13.1	16.4	19.7	23	26.2	29.5	32.8	36.1	39.4	42.7	45.9	49.2	52.5	55.8	59.1	62.3	65.6
lx	3376	844	375	211	135	94	69	53	42	34	28	23	20	17	15	13	12	10	9	8
fcd	313.6	78.4	34.8	19.6	12.5	8.7	6.4	4.9	3.9	3.1	2.6	2.2	1.9	1.6	1.4	1.2	1.1	1	0.9	0.8

Intensities in 0° C-plane

0°	2°	4°	6°	8°	10°	12°	14°	16°	18°	20°	22°	24°	26°	28°	30°	32°	34°	36°	38°
3376	3230	2893	2559	2284	1975	1621	1226	870	598	415	294	208	142	93	61	39	28	18	14
100%	96%	86%	76%	68%	58%	48%	36%	26%	18%	12%	9%	6%	4%	3%	2%	1%	1%	1%	0%

Intensities in 90° C-plane

0°	2°	4°	6°	8°	10°	12°	14°	16°	18°	20°	22°	24°	26°	28°	30°	32°	34°	36°	38°
3376	3230	2893	2559	2284	1975	1621	1226	870	598	415	294	208	142	93	61	39	28	18	14
100%	96%	86%	76%	68%	58%	48%	36%	26%	18%	12%	9%	6%	4%	3%	2%	1%	1%	1%	0%

Intensities in 180° C-plane

0°	2°	4°	6°	8°	10°	12°	14°	16°	18°	20°	22°	24°	26°	28°	30°	32°	34°	36°	38°
3376	3209	2921	2619	2340	2003	1615	1218	866	593	401	277	194	133	87	55	36	25	18	13
100%	95%	87%	78%	69%	59%	48%	36%	26%	18%	12%	8%	6%	4%	3%	2%	1%	1%	1%	0%

Intensities in 270° C-plane

0°	2°	4°	6°	8°	10°	12°	14°	16°	18°	20°	22°	24°	26°	28°	30°	32°	34°	36°	38°
3376	3209	2921	2619	2340	2003	1615	1218	866	593	401	277	194	133	87	55	36	25	18	13
100%	95%	87%	78%	69%	59%	48%	36%	26%	18%	12%	8%	6%	4%	3%	2%	1%	1%	1%	0%

Beam Angle 50%	Field Angle 10%	Cutoff Angle 2,5%	Intensity Ratio in 120° Cone	Intensity Ratio in 90° Cone
23.3°	42.1°	56.6°	99.9%	99.4%